




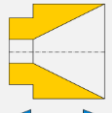
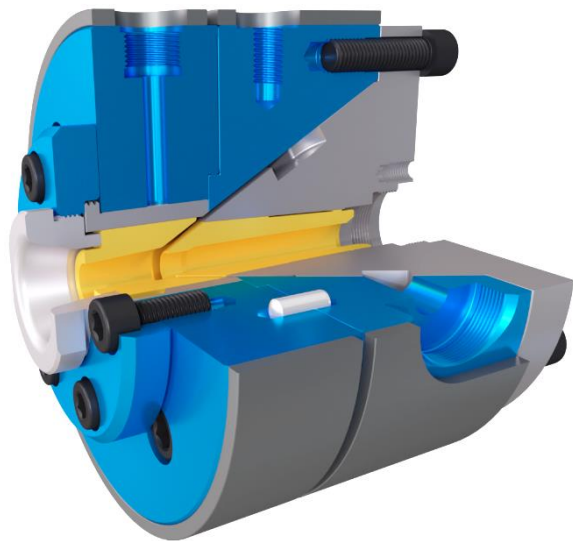




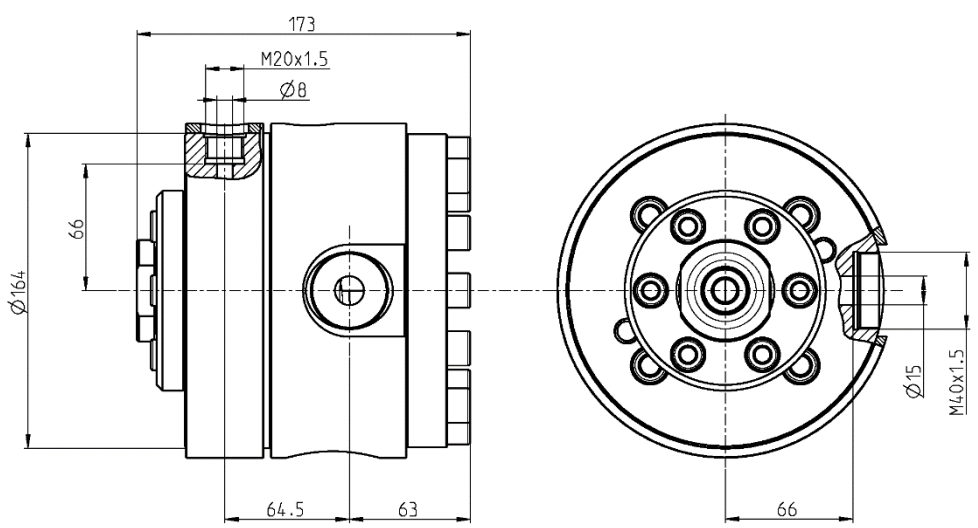


E12BN11

 Skin coloration	 Striping
 Single layer	
 Fix centring	 2+ Heating zone(s)
 Die adjustment	


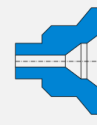
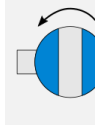
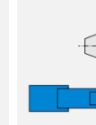

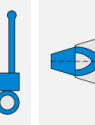
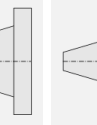



- Power cable 
- Data cable 
- Special shaped 
- Tube 



Version	Maximum opening of the Tip	Maximum opening of the Die	Main entry port / thread		Auxiliary entry port / thread		Total length	Crosshead diameter	Max. working temperature	Max. working pressure	Weight
			A	B	C	D					
-	14 mm	20 mm	15 mm	M40x1.5	8 mm	M20x1.5	173 mm	164 mm	<250°C	500 bars	24 kg

Options

 Vacuum connection	 Extruder connection	 Bypass module	 Telescopic maintenance device	 Trolley or stand	 Customized distributor	 Heated distributor	 300°C Reinforced heaters		
--	--	--	--	---	---	---	---	--	--