


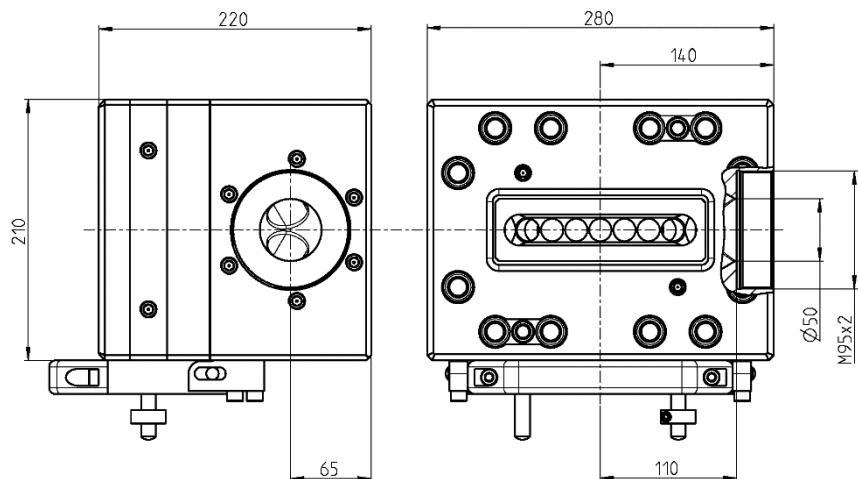
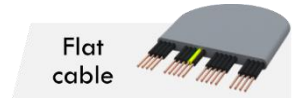
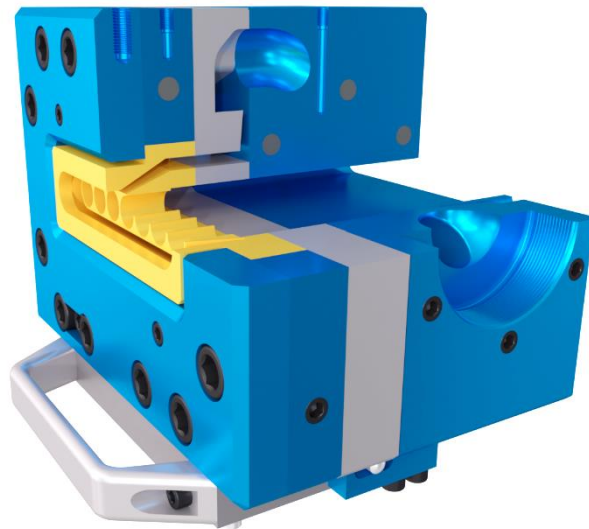




E150PN10

 Single layer	
 Fix centring	 2 Heating zone(s)



Version	Maximum opening of the Tip	Maximum opening of the Die	Main entry port / thread		Auxiliary entry port / thread		Total length	Crosshead diameter	Max. working temperature	Max. working pressure	Weight
			A	B	C	D					
-	140x15 mm	150x21 mm	50 mm	M95x2	-	-	220 mm	210 mm	<400°C	400 bars	118 kg

Options

 Vacuum connection	 Extruder connection	 Bypass module	 Trolley or stand	 Customized distributor						
--	--	--	---	---	--	--	--	--	--	--