

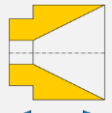
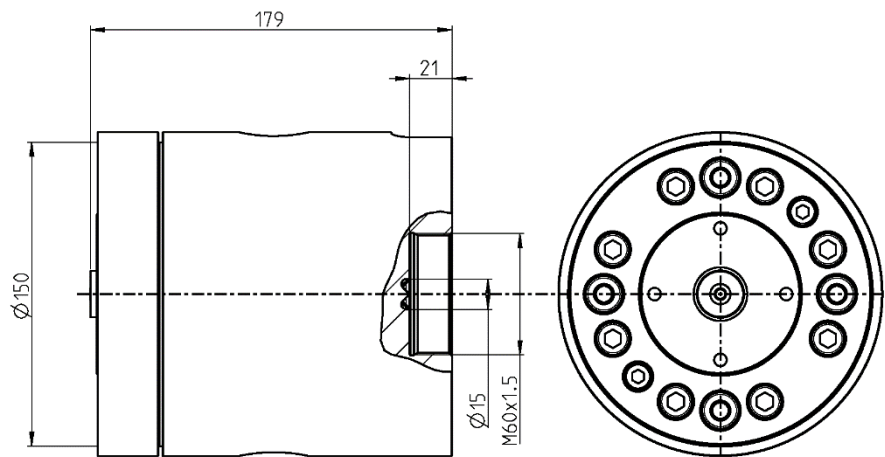
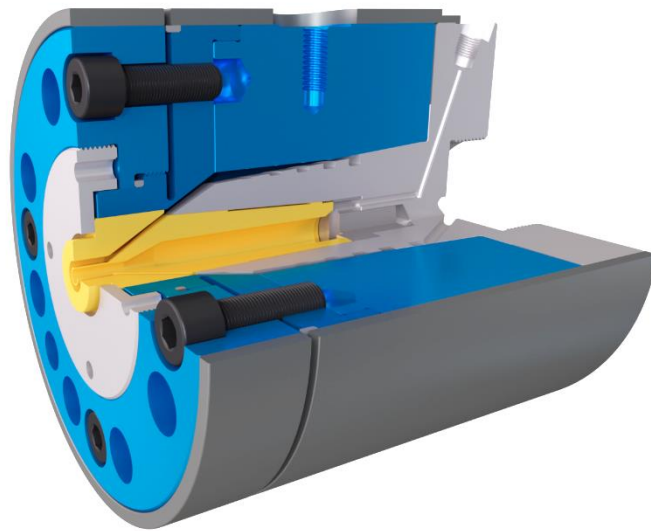




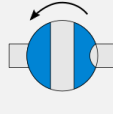


# E20LN10

 Single layer	
<b>FT</b> Fine-tuning centring	<b>2</b>  Heating zone(s)
 Die adjustment	



Version	Maximum opening of the Tip	Maximum opening of the Die	Main entry port / thread		Auxiliary entry port / thread		Total length	Crosshead diameter	Max. working temperature	Max. working pressure	Weight
			A	B	C	D					
-	-	20 mm	15 mm	M60x1.5	-	-	179 mm	150 mm	<250°C	400 bars	25 kg

## Options

 Vacuum connection	 Extruder connection	 Bypass module	 Trolley or stand	 300°C Reinforced heaters						
--	--	--	---	---	--	--	--	--	--	--