


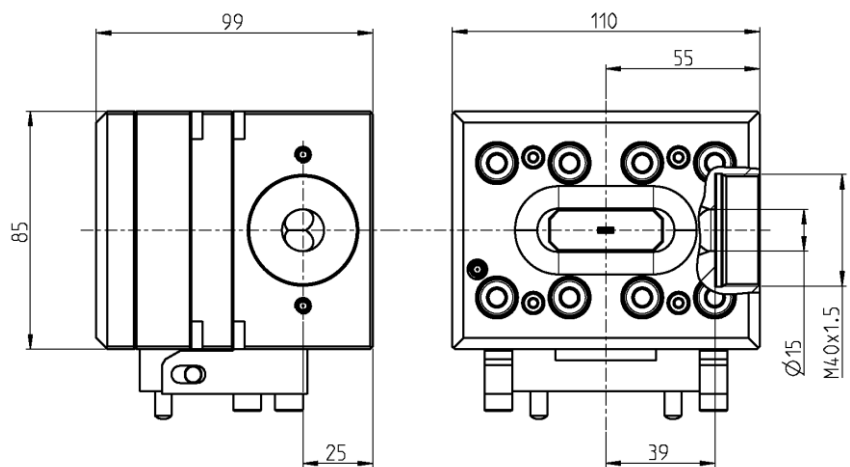
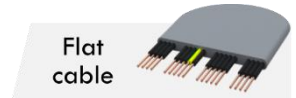
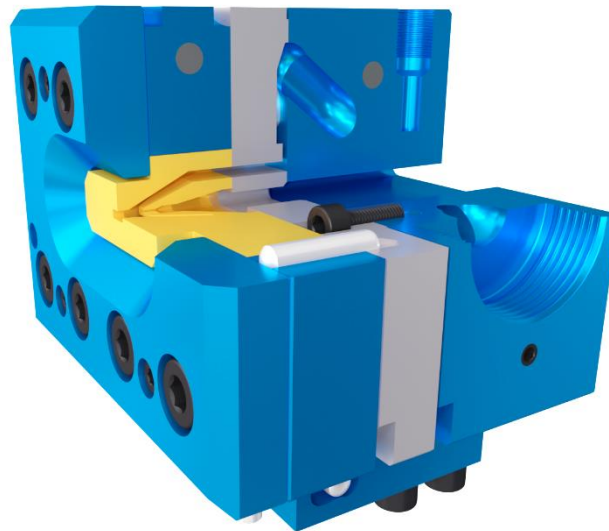




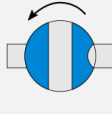

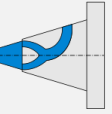
E20PN10

 Single layer	
 Fix centring	 2 Heating zone(s)



Version	Maximum opening of the Tip	Maximum opening of the Die	Main entry port / thread		Auxiliary entry port / thread		Total length	Crosshead diameter	Max. working temperature	Max. working pressure	Weight
			A	B	C	D					
-	20x5 mm	22x7 mm	15 mm	M40x1.5	-	-	99 mm	85 mm	<400°C	600 bars	7 kg

Options

 Vacuum connection	 Extruder connection	 Bypass module	 Trolley or stand	 Customized distributor					
--	--	--	---	---	--	--	--	--	--